

DAILY KIOSK SETUP CHECKLIST

step 01, Plug kiosk transformer into wall receptical, ensure all power connections are secure



step 02, Confirm camera LED status light is on and displaying blue

step 03, Power on (3 second long hold) tablet via right rear access port



step 04, Once lock screen has fully loaded, swipe up to unlock and access home screen

step 05, Click the e-Plus one app



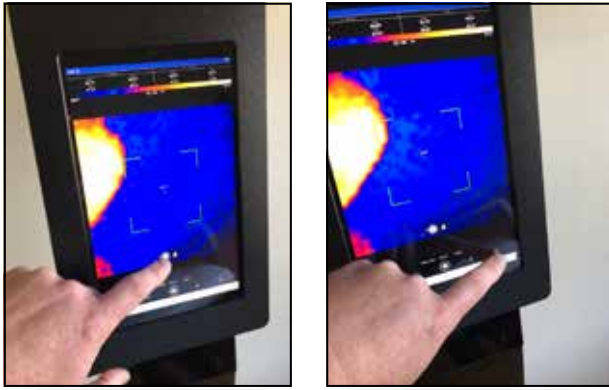
step 06, Run a test scan. Remember to fully fill the human silhouette shape area, remove all glasses and headwear for the most accurate reading

step 07, Take temperature with traditional scanning device (temporal thermometer, etc)

step 08, If scanner readings are within acceptable range, daily setup is complete

step 09, If scanner readings are outside acceptable range, complete steps 10 through 13

step 10, Open application settings by switching to manual camera mode and then selecting the gear icon in the lower right of screen



step 11, Adjust emissivity up or down as needed, If the previously displayed temp. is too low, lower the emissivity value, If the previously displayed temp. is too high, raise the emissivity value



step 12, Close settings window by selecting done in the upper right corner and selecting person detection mode on the screen

step 13, Repeat test scan



step 14, If scanner readings are within acceptable range, daily setup is complete

step 15, If scanner readings are still outside acceptable range, repeat steps 10 through 13 as needed

step 16, Daily setup is complete